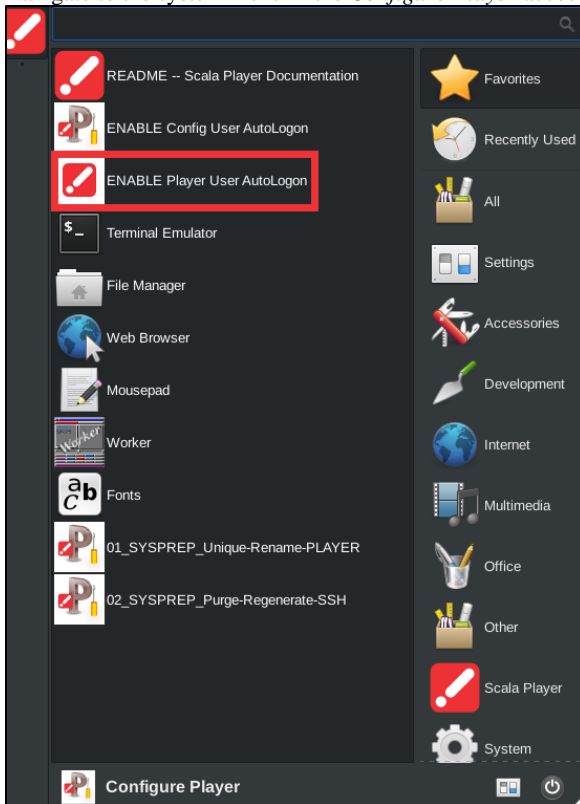


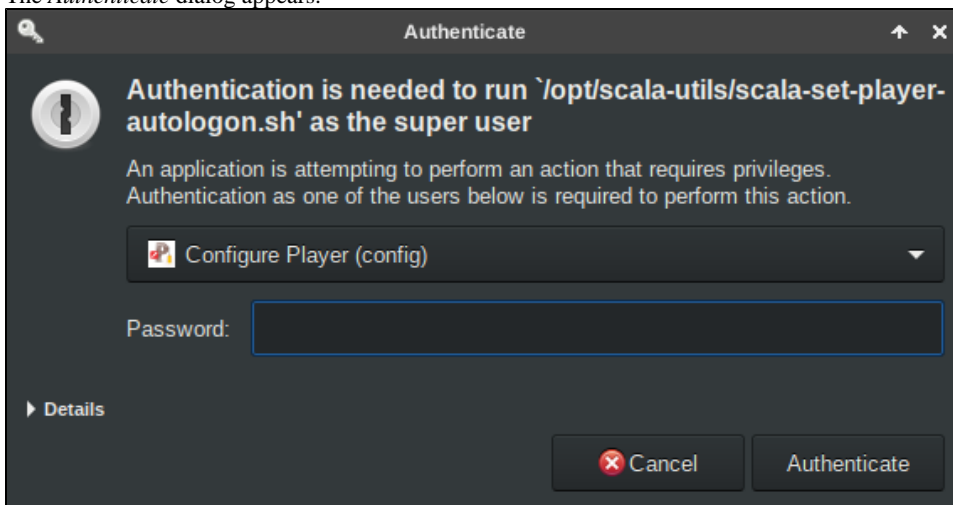
Set the System Auto Login to the Scala Player Account for the LINQ Tablet

LINQ

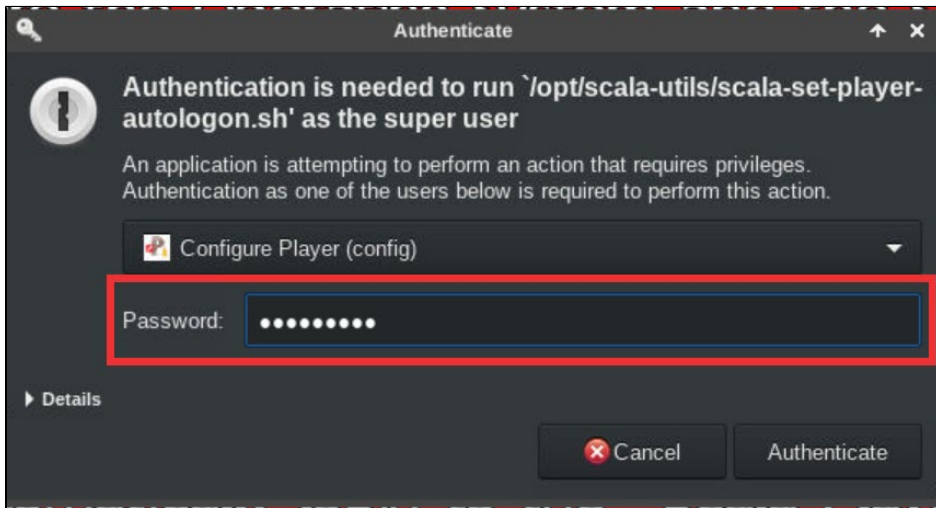
1. Navigate to the system menu in the *Configure Player* account and click the **ENABLE Player User AutoLogon** option.



The *Authenticate* dialog appears.

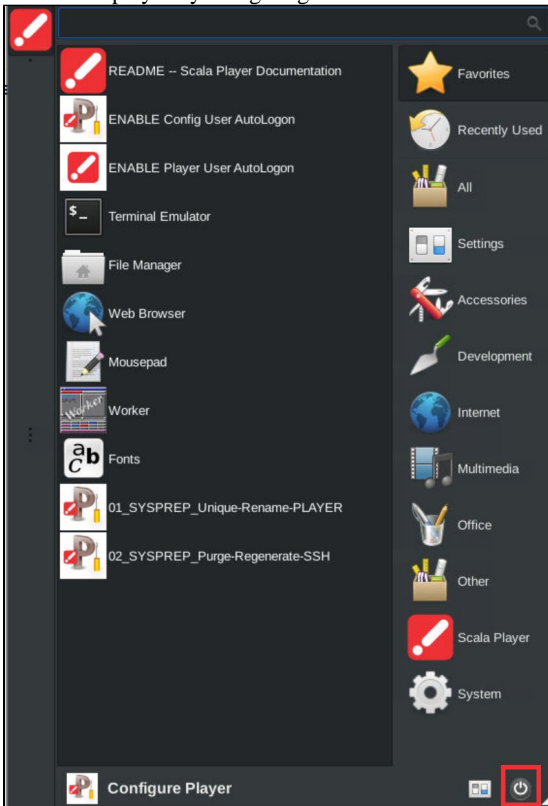


2. Enter the *Configure Player* account password and click the **Authenticate** button.

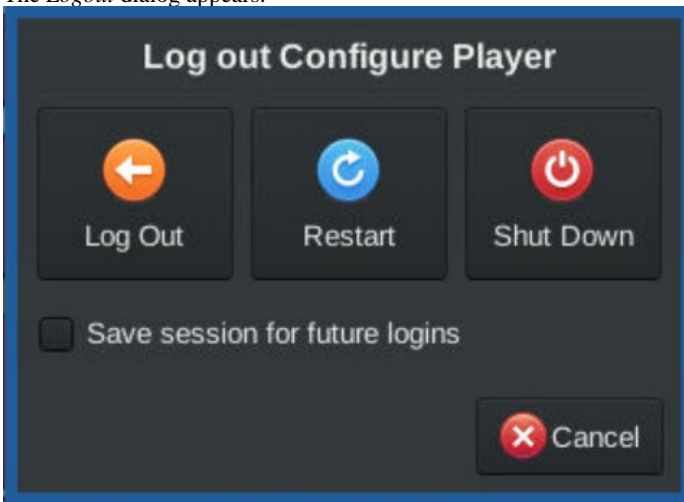


The script runs.

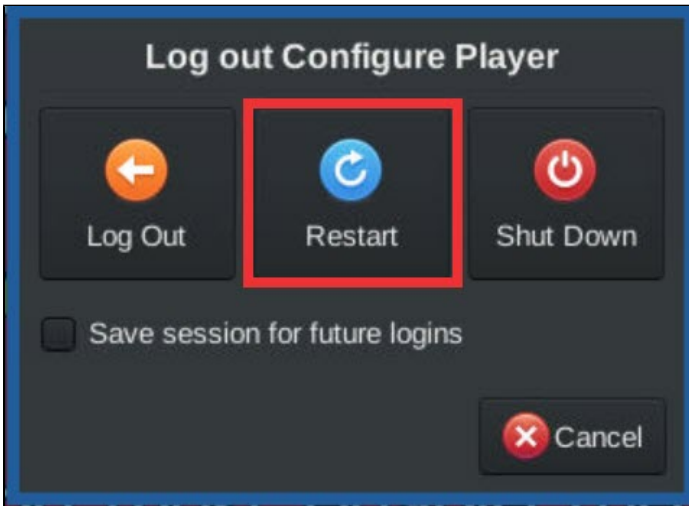
- Restart the player by navigating to the *Scala menu* and selecting the **Power** button.



The *Logout* dialog appears.



4. Click the **Restart** button.



The player restarts and automatically logs in to the *Scala Player* account.